

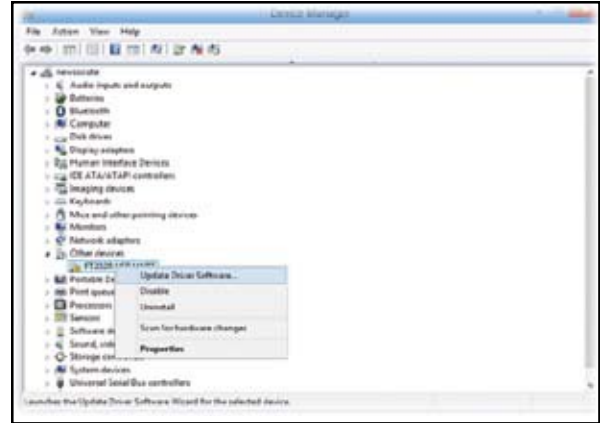
Install the USB Driver

Connect the TT Torque tester via an RS-232 Cable or USB cable to a PC. Turn on the TT.

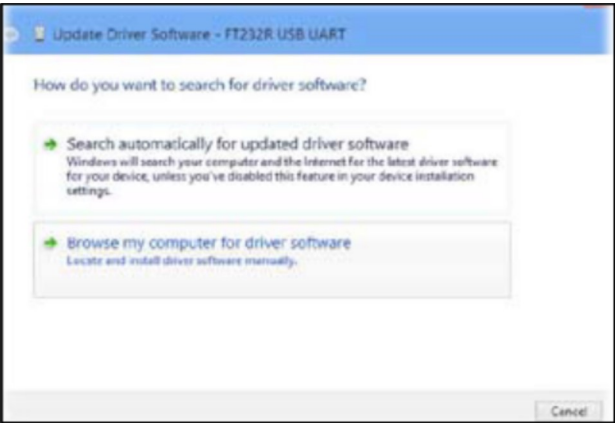
Note: If using serial RS-232 Connection, loading the driver is not necessary. Skip to Step 2 Program Installation.

1. Once the TT is connected to the PC, depending on operating system version the driver may load automatically. Open the Device Manager. If it shows a similar view to picture 1, then the driver has been successfully installed. Skip to Installation. However, if it shows a similar screen to picture 2, you will need to manually install the driver. See the following driver installation pages.

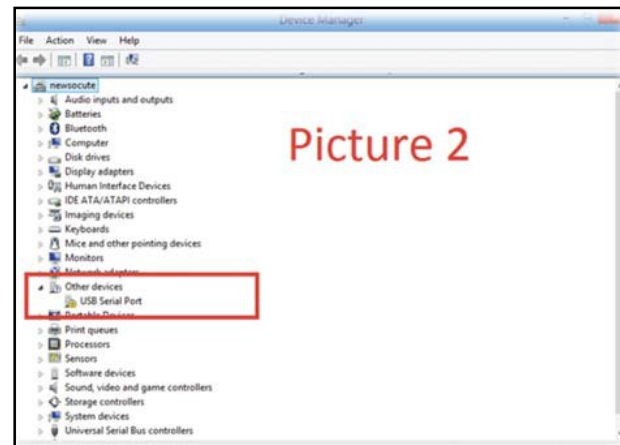
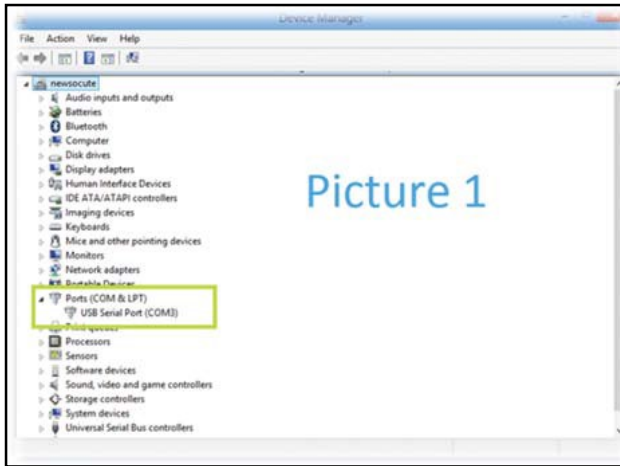
2. Right click and select Update Driver Software.



3. Choose Browse my computer for driver software.



4. Click the Browse button. You must select location of driver. The driver is located in the Driver for TT folder you downloaded from Shimpo's website. Check box Include subfolders. Click Next.



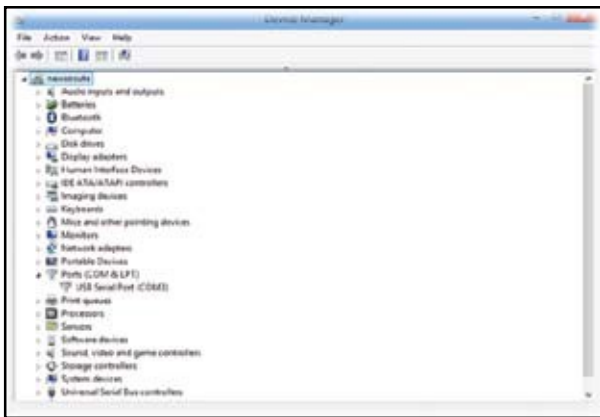
5. Driver is installed.



3. Software is installed and ready to run.



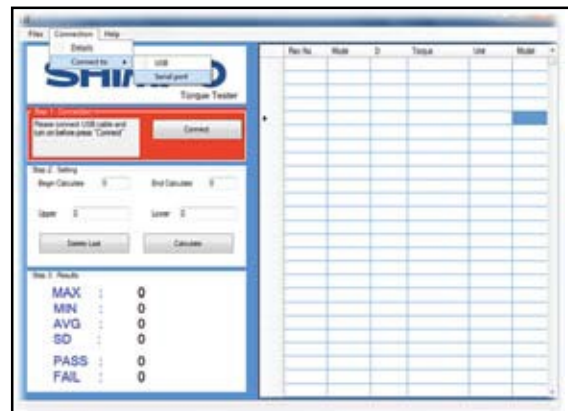
6. Back to the Device Manager. Observe Ports (COM & LPT). They will show you which port number will be active and proper to select in the TT software program.



Connect TT to the Torque Tester Software

1. Turn on TT and connect cable to PC.

2. Open Torque Tester Software. You must go to the top menu Connection and choose Serial Port or USB.

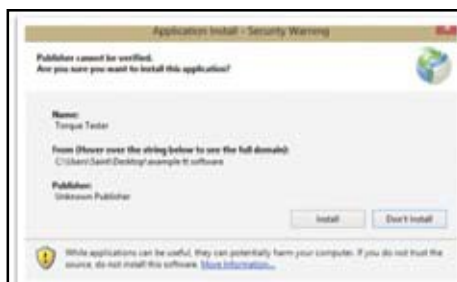


Program Installation

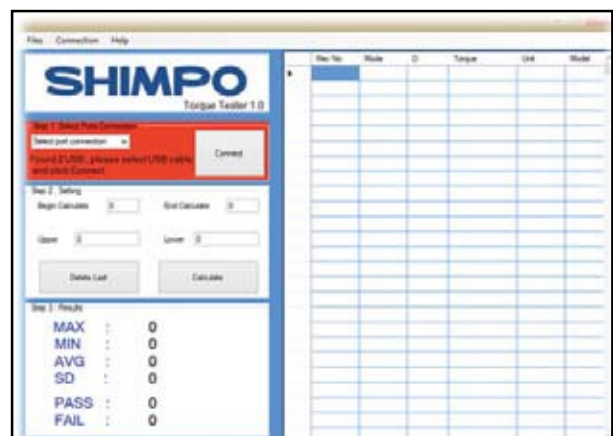
1. Click on the setup icon. File setup.exe



2. Click the install button



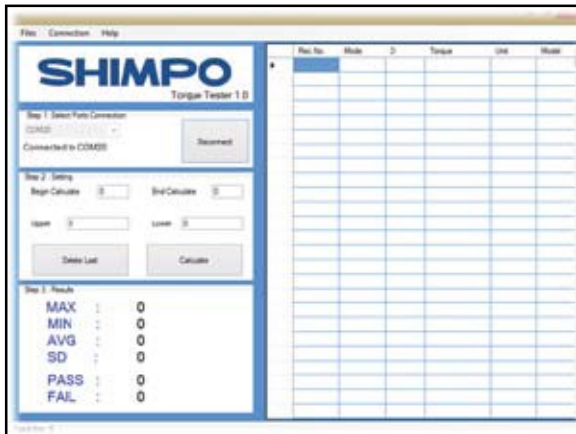
3. Once chosen, if the TT software does not automatically connect to the port you saw in the Device Manager, click on the drop down box in the red section to choose the proper COM port and then click connect.



If the USB port is not found, you must check that the USB cable is not loose and is properly connected. Turn off the torque tester and then turn back on. Click the Refresh button.

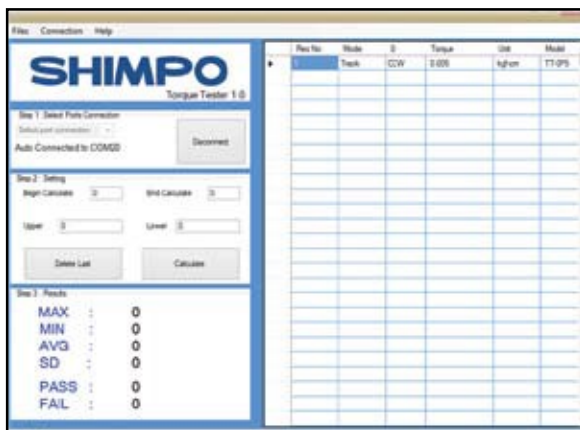


4. Once a connection is successfully made, the red box will change color to blue indicating the software is communicating with the TT unit and ready to use.



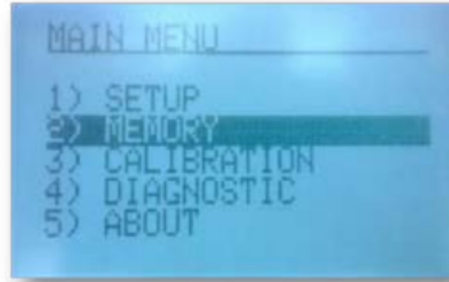
Sending Live Data from the TT to the Torque Tester Software

1. You can send the live data that is on the TT's display screen in Track, Peak, F-Peak or Track/Peak modes by pressing the PRINT button on the TT. The data will show subsequently in the table with each press of PRINT.



Upload previously stored memory to the Torque Tester software.

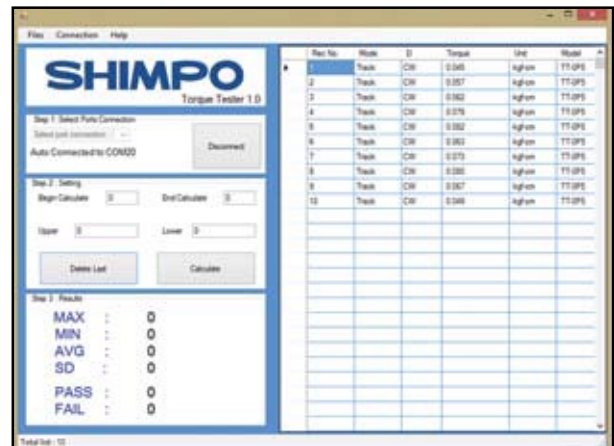
1. On the TT, press the MENU/ESC button and select "2) MEMORY".



2. Select "4) UPLOAD ALL".

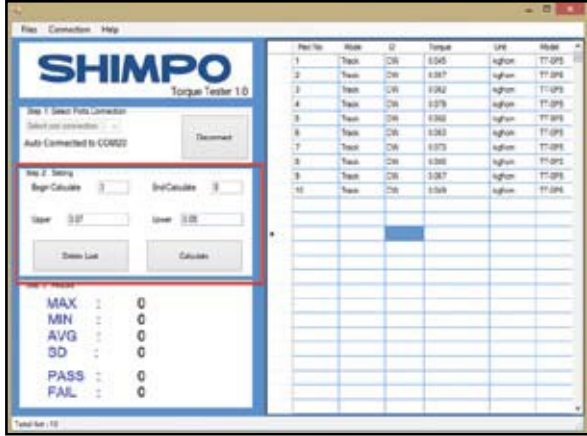


3. All memory stored on the instrument will immediately load on the table. Click on the Files menu at the top and select from the drop down box to save the data, print or export to Excel. If you are through with reviewing this data, click on New under the Files drop down menu to clear the screen. To open previously stored and saved data files, go to the Files menu and select Open from the drop down box.



Calculate Max, Min, Average and Standard Deviation

1. You must define the Start/End recorded values for the program to include in your calculations under Begin and End Calculate. Pass and fail values may also be included if desired. If you do not require pass/fail information, leave these at zero and proceed by clicking the Calculate button.



2. Calculated results will immediately display in the bottom left.

